

If your gas supply is off

How to re-establish your gas supply and safely re-light your appliances

READ THIS CAREFULLY BEFORE YOU DO ANYTHING

- Ensure all appliances within your premises are turned **OFF**.
- Locate and verify the gas meter for your premises. (If there are multiple meters, check that the number marked on the gas meter matches your apartment number.)
- Establish the location of the “Inlet” and “Outlet” control valves and determine if they are open or closed by consulting the gas meter installation photos (over page).
- Leave the “Outlet” control valve handle in the **closed** position and slowly turn the “Inlet” control valve handle to the **open** position (control valves are one quarter turn). *When handle is in line with pipe it is OPEN. When handle is across pipe it is CLOSED.*
- Now turn the “Outlet” control valve slowly to the **open** position. (you should hear a short sound of gas passing through the meter installation)
- Return to your premises and verify that the gas supply has been re-established. The easiest way is normally to light a gas stove/ cooktop burner.

NOTE: It may take a short time for the stream of gas to push out any air that may have accumulated in the consumer piping. You will hear this air being pushed out initially, and the flame may take a short time to establish. The flame may be dark blue and noisy or lift off the burner. This is normal. It will gradually become a steady, light blue, soft flame, in a few minutes. If you are unable to establish a flame contact Mt Hotham Alpine Resort on 5759 3550.

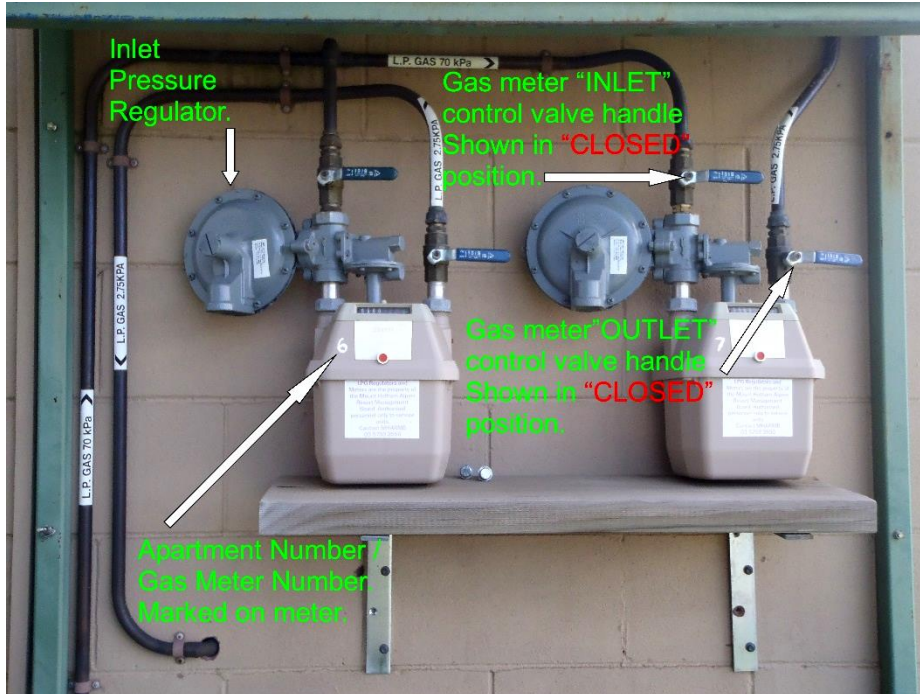
DO NOT leave any burner turned on and un-attended, during the re-lighting procedure.

- Follow the manufacturer’s instructions and complete the re-lighting of all other appliances within the premises as required. (All appliances vary, some have pilot lights, some have automatic ignition, consult the owner’s manual or the internet if unsure.)

If you smell, hear, or see gas escaping, or you believe there is something not right or un-safe, return to your gas meter and close either control valve to isolate the supply. Contact Mt Hotham Alpine Resort on **(03) 5759 3550** for assistance.

Mt Hotham Alpine Resort L.P Gas Customer Information

Gas meter control valve in **closed** position: *When handle is across pipe it is CLOSED.*



Gas meter control valve in **open** position: *When handle is in line with pipe it is OPEN.*

