

HOTHAM

Mt Hotham Alpine Resort

L.P. Gas Safety Tips

for Mt Hotham Alpine Resort Gas Customers

Liquefied Petroleum Gas (L.P. Gas) has been widely and safely used for about 100 years; however, safety precautions should be taken when using this fuel.

CAUTION: L.P. GAS IS HEAVIER THAN AIR.

L.P.GAS WILL POOL AT THE LOWEST AREA IN A ROOM OR BUILDING

- Never store flammable liquids or fuels including rags, papers or any other flammable materials near gas meters or gas appliances.
- DO NOT use utility cupboards or plant rooms that house gas appliances as “storage” rooms.
- L.P. Gas appliances require air for correct combustion. Do not block air grilles or restrict ventilation to plant rooms, utility cupboards or to areas where gas appliances are installed and are operating. Ensure that all rooms have adequate ventilation.
- DO NOT use un-flued gas heaters in bedrooms or bathrooms. Obtain advice from Energy Safe Victoria, or a registered gasfitter, on current regulations and restrictions in regards gas heaters/appliances in bedrooms or bathrooms.
- Ensure that gas isolation valves for appliances are accessible and clearly labelled and that persons using the premises are aware of their location and purpose.
- Familiarize yourself with the location of your gas meter and mains shut-off/isolation valve.
- DO NOT attempt to fix, alter, or repair your gas supply/metering or gas appliance equipment.
- Engage suitably qualified gasfitters/service personnel to regularly inspect and service your gas installation and appliances.
- Use “[Before You Dig Australia \(DYBA\)](#)” prior to any excavation works within or around your property and call a service locator if there are services present. Order your plans at least 5 days before the locator arrives.

ARV T/A Mt Hotham Alpine Resort is the Gas Supply Authority at Mt Hotham and can be contacted for further advice, assistance, or gas related enquiries – Phone: **(03) 5759 3550**.

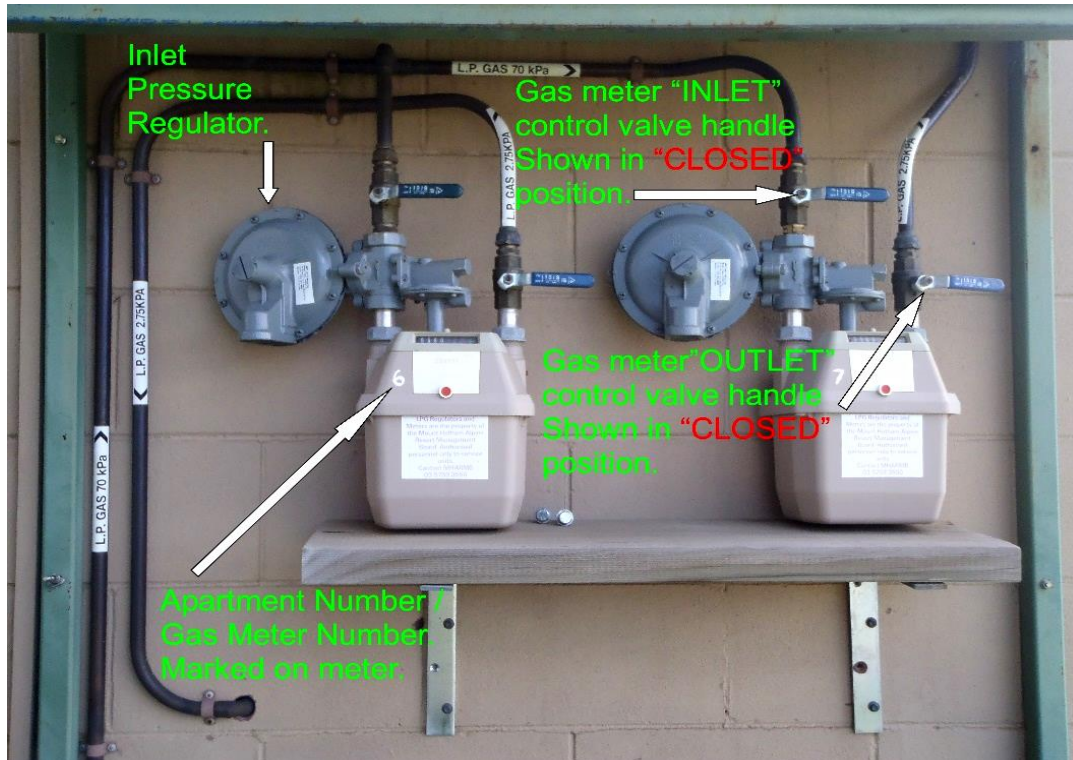
For additional information regarding the safe use of Gas, you can access The Energy Safe Victoria website via the following link. <https://www.esv.vic.gov.au/>

Remember: Safety First

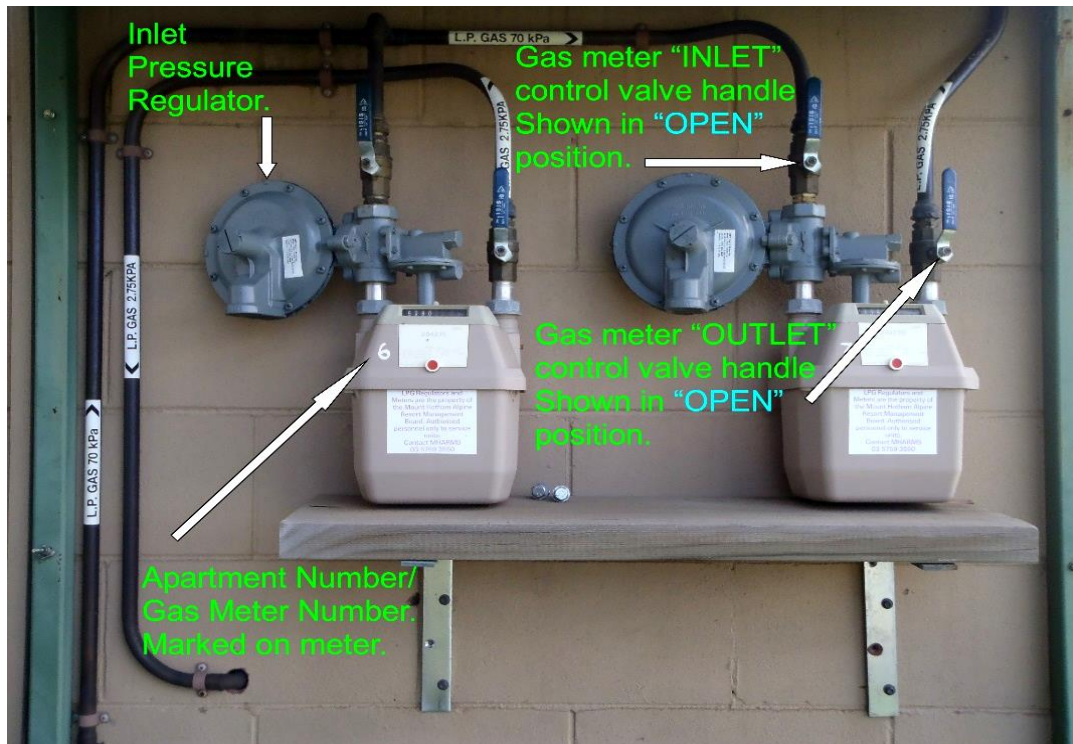
HOTHAM

Mt Hotham Alpine Resort L.P Gas Customer Information

Gas meter control valve in **closed** position: When handle is across pipe it is CLOSED.



Gas meter control valve in **open** position: When handle is in line with pipe it is OPEN.



Remember: Safety First