

Mountain Staff Permit Information 2026

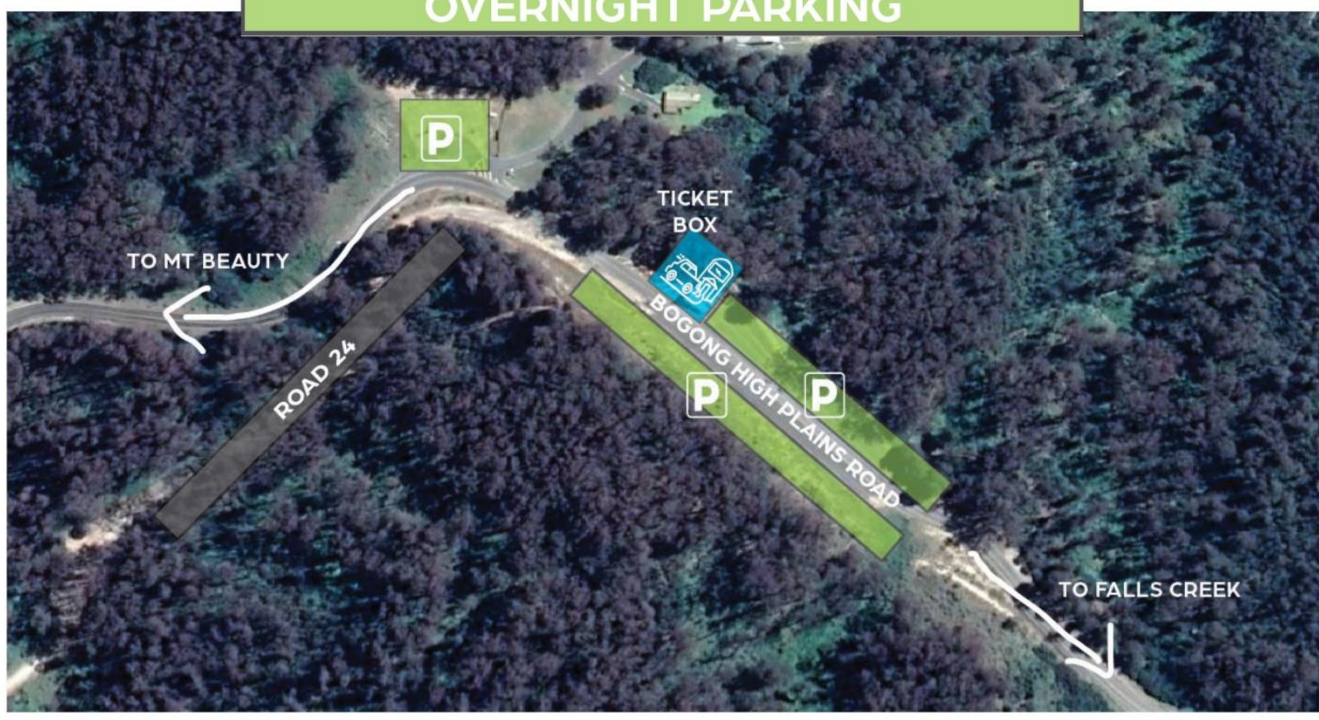
Frequently Asked Questions

Permit Information	
What permits are available for Staff?	Mountain Staff Permit - \$293 Road 24 Permit - Free
When can I get a permit?	Permits will be available closer to winter. Normally these go on sale at the beginning of May and are available for purchase all season long.
How do I get a permit?	You are required to complete an application form and provide evidence of employment.
Why do I need a permit?	Every vehicle that enters Falls Creek resort during the winter season is required to have and display a permit. Including free parking permits
What is the difference between Road 24 and Mountain Staff Permit?	<ul style="list-style-type: none"> - Mountain Staff Permit is a paid option that allows you to park in the MTN staff day car parking during the day and in the allocated MTN staff overnight parking during the night. A free shuttle service will operate for MTN Staff between the carpark and village. These parking areas are maintained and snow cleared. - Road 24 is a free permit that only allows parking on a dirt road at the entrance to Falls Creek. This road is not regularly snow cleared or maintained during the winter and there is access to day car parks.
How much is the Mountain Staff Permit?	\$293 for the whole winter season
How much is the Road 24 Permit?	Free for the whole winter season
Parking Information	
Where can I park for MTN staff Permit overnight?	At the Howman's gap ticket office (4km below Falls Creek) there are marked carparks at this location.
Where can I park for MTN staff permit day parking?	Right hand side of the Lower Windy carpark above the CFA as signed.
Where can I park for a Road 24 permit?	On Road 24 which is the dirt road at the entrance to Falls Creek before Howmans gap. You must only park on the left hand side of the road as signed.
What if I drive up each day to work?	You must park only in the MTN staff day parking area which is available for use from 6am to midnight as signed.
Where can't I park?	You are not allowed to park in any other areas or car parks (except late arrivals – refer below).
Why is there a different parking for staff to guest parking?	For guests that are paying full price for their parking they get a more priority parking. This shows great customer service and allows the resort to offer a better experience to the guest.
What happens if I park in the wrong spot?	You risk receiving an infringement. The infringement for parking in an area not permitted is approx. \$185 per day.
Can I access the village during low snow?	If there is 30-minute access – you are allowed to drive into the village to drop off your stuff and return to the correct carparking location (either day or overnight). This is only 30 minute access – parking in the village for longer risks receiving an infringement.

Shuttle Information	
How do shuttles work?	Hourly shuttles from ATS to Howman's Gap and return will operate from 8am – 5pm daily. <ul style="list-style-type: none"> - Access to Howman's Gap after 5pm is on request – contact 5758 1203 - Shuttles will operate until 10pm Sat – Thur and midnight on Friday all season while ATS services are operational
How often do they run?	Shuttles leave on the hour every hour from ATS, returning from Howman's approximately quarter past the hour. If there is a delay please call 5758 1203.
What can I bring on the Shuttle?	Shuttles will bring all luggage/shopping from Howman's Gap - there is no requirement to drop off items in the village then return to Howman's
What if I miss the hourly shuttle?	Call 5758 1203 – where there is capacity ATS may be able to organise a pick-up or drop off outside of the allocated time slots
What happens if I arrive late? After 10pm (or midnight on Friday) and ATS is not operating.	You can park in the signed Late Night arrivals parking bays (just below ATS or just above the police station) until 10am the following morning. You MUST move your vehicle before 10am to the appropriate parking area.
Other Information	
Do I need chains?	Yes, you are required to carry chains that fit your vehicle and to fit them where directed. This is requirement for all vehicles using Bogong High Plains Rd in winter.

Overnight and Daytime Staff Parking Map

OVERNIGHT PARKING



DAY PARKING

